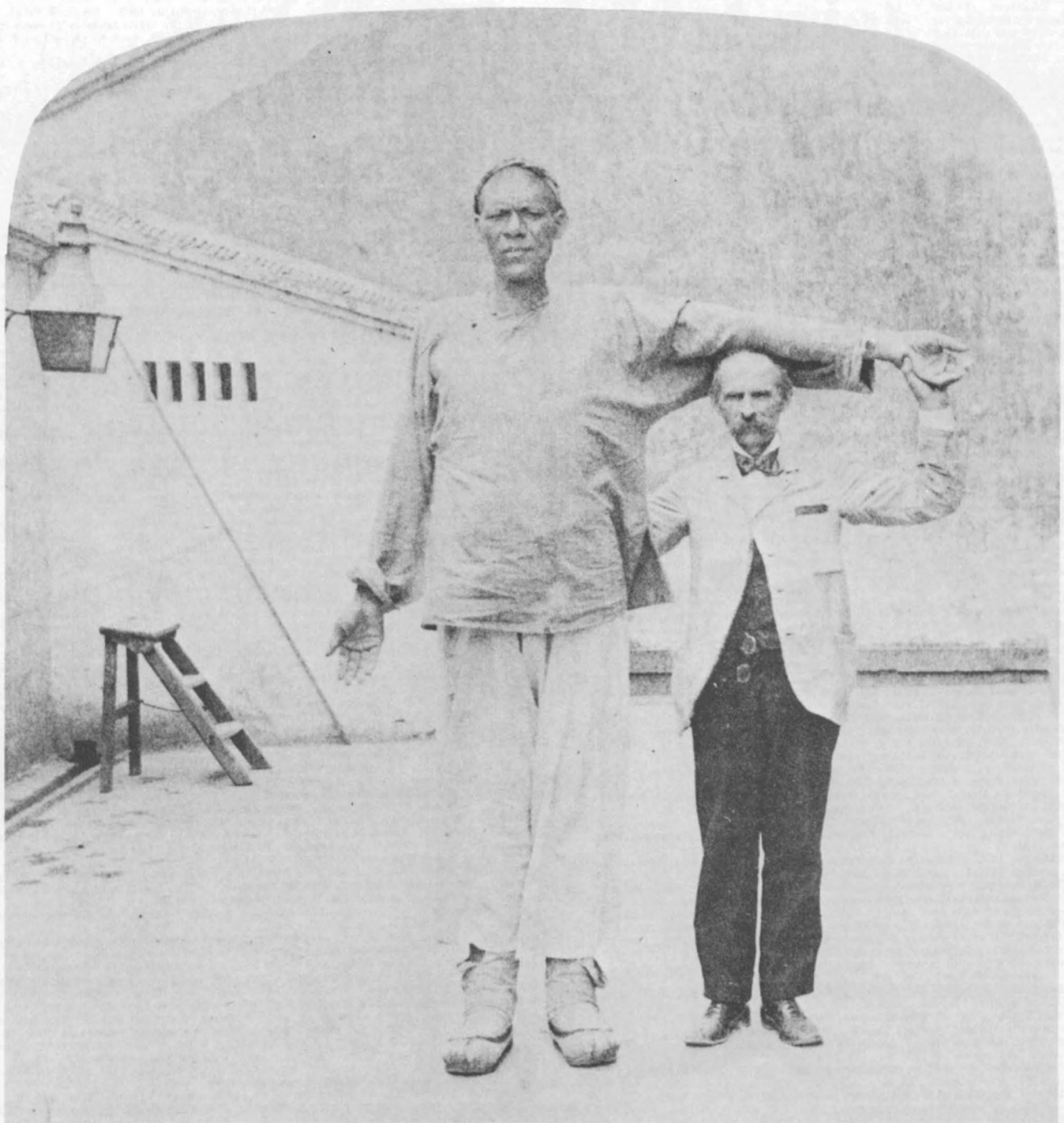


THE NATIONAL STEREOSCOPIC ASSOCIATION

# Stereo World



VOL.7, NO.4

SEPTEMBER-OCTOBER 1980



Ad #11: TERMS OF SALE: Ten day return on all items. Payment with order, plus 50¢ postage for one view, 75¢ for 2-3, \$1 for 4-5, etc. Massachusetts residents must add sales tax.

Ads of photographic including stereo also appear in the magazine THE PHOTOGRAPHIC COLLECTOR. See back cover July-August STEREO WORLD for subscription information.

\* \* \* \* \*

- 1 ANIMALS: CATS - "I love bof of em." Girl sits in chair with two cats on her lap. U&U. G-VG \$3.50
- 2 -CATS - The unwelcome guest who came just at tea time. Cat drinks from crying child's dish on dinner table! U&U, 1902. G-VG \$3.50
- 3 -Tired of play. Girl and cat shown sleeping, very close up. U&U, 1898. G-VG \$3.50
- 4 -DOGS - The Puppies' Singing School. Girl directs line of puppies. U&U, 1897. G-VG \$3.50
- 5 -DOG AND CAT - Household pets. Girl holding cat and dog, with cat resting under dog's paw! U&U, 1897. G-VG \$4
- 6 BLACKS: Cabinet size view of Black field hands picking cotton. #224 in neg. A. Gd. \$3.50
- 7 AMERICAN STEREOSCOPIC CO. (Langenheim successors): Gray mount view of interior of Immaculate Conception Church in Boston, #75. Abt. Good \$2.50
- 8 AUTOMOBILES: Experts Testing Engines in Automobile Plant, Detroit, Mich. Keystone #22142. Excellent. \$7.50
- 9 -The Automobile Somnambulist: "keep quiet, I'll have it going in a minute." Man works under bed with tools while distressed wife looks on. U&U, 1906. VG \$5
- 10 AVIATION: Six biplanes flying over Chicago skyline, plenty of auto traffic also seen. Keystone #32785. Excellent. \$15
- 11 CELEBRITIES: HORACE GREELEY - What appears to be a doll of Greeley in skeleton leaves. I.L. Rogers, 1872. VG \$4
- 12 -Miss Pixley in "Pinafore." Copy view from St. Nicholas Bazaar, Providence R.I. VG \$3
- 13 DISASTERS: TRAIN WRECK - Two fine views of wrecked train cars at the Tariffville (Ct.) Bridge disaster in 1878. By D.S. Camp of Hartford. VG \$29.50
- 14 -TRAIN WRECK - S single view showing wrecked train cars, locomotive on its side, winch and workers on tracks, and crowd watching photographer. The topper is two bodies with arms neatly folded on ground! By R.B. Whittaker, Liberty, N.Y. One of the best content train wreck views I've ever seen. Good. \$19.50
- 15 -BOSTON FIRE, 1872 - Six fine J.W. & J.S. Moulton cabinet size views. #362, 368, 372, 373 (2 different), 375. Averaging About VG The six \$39.50
- 16 --2 views by Charles Taber, #3 & #8. Good. \$9.50
- 17 -MILL RIVER (Mass.) FLOOD, 1874 - 2 Cabinet size views by A.E. Alden of Springfield. #18 & #24. Good, scarce \$7.50
- 18 --3 Cabinet size views by Knowlton Bros. of Northampton. #6,72 & 101. AG-VG \$9.50
- 19 -View near stone bridge, workmen searching for bodies. Knowlton Bros. Good. \$3
- 20 -WORCESTER (Mass.) FLOOD, 1876 - #1 Gap in the Dam. By J.W. & J.S. Moulton. VG \$5
- 21 -ST. LOUIS TORNADO, 1896 - #11306 Died at his post. Man seen in wreckage. B.W. Kilburn. Good, scarce. \$4.50
- 22 -MOUNT PELEE VOLCANIC ERUPTION, MARTINIQUE, WEST INDIES - Soufriere's steaming cauldron 48 hours prior to eruption. Keystone #14415, VG \$3.50
- 23 --A terrible volcanic explosion - Mont Pelee in eruption, June 1902. U&U. Exc. \$4.50
- 24 --The smoking, desolate tomb of St. Pierre's 30,000 inhabitants - slain by a blast of Mont Pelee's poisonous breath. U&U. VG \$4
- 25 --Mt. Pelee in eruption as seen from the sea. Keystone #14343. G-VG \$3
- 26 -SAN FRANCISCO EARTHQUAKE & FIRE, 1906 - view of wreckage with Temple Emanuel in background, and man with large leather (camera?) case in foreground. U&U #8204. VG \$8
- 27 --3 B&W lithographs by Tom Phillips, #593, 594 & 595. VG, scarce series. \$5.50
- 28 -MESSINA, ITALY EARTHQUAKE, 1909 - Four very scarce B.W. Kilburn views, #17299, 17305, 17306, 17307. VG to Excellent. The four \$35
- 29 EXPEDITIONS: HAYS GREENLAND EXPEDITION, 1860 - A very rare view of this very rare subject, on heavy cream mount. "Tomb of Sankay," apparently showing crude grave of dead expedition member. VG \$29.50
- 30 -POWELL SURVEY, 1873 - Sculptured Rocks on Vermillion Creek. #114. About Good. \$7.50
- 31 --In-Ta Utes. Two squaws and Indian brave. #117. Neg. by Hillers, as is the above. Fair to A.G. \$12.50
- 32 --Home of Ta-va-puts. #99, also by Hillers. Squaw in foreground, brave resting in tepee in background. About Good. \$22.50
- 33 EXPOSITIONS: CRYSTAL PALACE - Statues in the Nave. Gray narrow mount to fit French Brewster viewers. Excellent. exc. same sale where the four Lincolns appeared. \$6
- 34 -LONDON EXPOSITION, 1862 - Entrance to Staircase, Eastern Dome. London Stereo Co. Same smaller size as above (6 1/2"x3 1/2") and from same historic collection. G-VG \$4
- 35 -VIENNA EXPOSITION, 1873 - The Rotunda. Vienna Photographic Association #71. Tiny chip from top left corner, otherwise VG and very scarce \$4.50
- 36 -U.S. CENTENNIAL, PHILADELPHIA, 1876 - General Washington's Carriage. Centennial Photographic Co.#1945. Plus a good quality copy of this view. Both VG \$9.50
- 37 --Main building, West End #1469, plus #817 Machinery Hall exterior. Both Centennial Photo. Co., Both Abt. Excellent. \$9.50
- 38 -MASSACHUSETTS CHARITABLE MECHANICS ASSOCIATION EXHIBITION, 1878 - Untitled Cabinet size view inside a main hall, showing exhibits from mezzanine. Exc. \$7.50
- 39 -COLUMBIAN EXPOSITION, 1892-3 - 4 B.W. Kilburn views, #8208, 8374, 8523, 8708. One overview, three exhibition building interiors. G-VG \$12.50
- 40 --4 more Kilburn views, #8883, 9036, 9393, 9530. AG-G \$9.50
- 41 --Another Kilburn views, #8009, 7948, 8142, 8186. VG \$15
- 42 --A final lot of 6 Kilburn views, #8243, 8269, 8335, 8437, 8531, 8884. VG \$22.50
- 43 -PAN AMERICAN EXPOSITION, BUFFALO, 1901 - The Great Electric Tower by Night. B.W. Kilburn #14619. VG, scarce \$4.50
- 44 -ST. LOUIS EXPOSITION, 1904 - Festival Hall and Cascades by Night. Keystone #15038. Excellent. \$4.50
- 45 -PARIS EXPOSITION, 1900 - 4 views by U&U; Panorama, Church of Old Paris, Italian Palace Looking through Eiffel tower. About Good. \$7.50
- 46 EASTER - Easter Morning, view of two children with chicks and eggs. U&U. VG \$4
- 47 FRITH - #24 Swallow Waterfall near Bettus-y-Coed. Signed in negative. Good. \$4.50
- 48 -Obelisk and Temple of Karnak at Thebes, Egypt. #1569, pub. by Anthony. A. Gd. \$4
- 49 INDIANS: A Wonder to the primitive inhabitants - Santa Fe train crossing Canon Diablo, Arizona. Classic view with Indians watching train. U&U, 1903. Exc. \$5
- 50 -Ute Indian and family, Colorado. Keystone #8082. Excellent. \$4
- 51 -Indian Ponies and Riders in Costume. Another classic view of Indians in full feather. Keystone #P-23092. VG \$5
- 52 -In the village of Blackfeet Indians near St. Mary's Lake, Glacier National Park, Montana. About Mint. Keystone #V23181. \$5
- 53 -Indian Basket Weaving, Prince Edward Island, Canada. Keystone #13882. Abt. Mint. \$3
- 54 -Among the Iroquois Indians, Quebec, Canada. Keystone #C23180T. Mint. \$4
- 55 -On the War Path. Derivative view of Indian(?) with rifle mounted on ox. Keystone #4004, 1897. VG, scarce \$4.50
- 56 -Iroquois Indians who took part in Tercentenary Pageant (1908), Quebec, Canada. Keystone #16061. Excellent. \$3.50
- 57 -The Indian Chief Blackhawk with Green Cloud and his Family. Great Closeup. Keystone #23095. About Mint. \$7.50
- 58 -Pueblo Indians making bread in Outdoor oven, Santo Domingo, New Mexico. Keystone #V23207. Mint. \$3.50
- 59 -Hopli Indian Home, Mishongnovi, Arizona. Squaw and boy posed. Keystone #V23192. Mint. \$3.50
- 60 MILITARY: Gray mount English tinted view titled "The Recruit." Fellow says goodbye to girl while officer smoking clay pipe looks on. VG \$4.50
- 61 -CIVIL WAR - Pickets on the Alert, Lewisville, Va. By Bierstadt Brothers, pub. by S.F. Adams. VG, scarce \$25
- 62 --View from Fort Sumter, April 14, '65. Overview of fortifications and cannon. Anthony War View for the Union #3135, VG \$17.50
- 63 --Breast works on left wing, Battle of Gettysburg. Anthony War Views #2387. Exc. \$15
- 64 --Bombproof quarters of Maj. Strong at Dutch Gap, 16th N.Y. Artillery. 2 Black soldiers posed near shelter. Anthony War View #2551. VG \$29.50
- 65 -CIVIL WAR RELATED - General Lee's House. Close view on flat yellow mount. VG \$4.50
- 66 --2 views of paintings of battles, Chattanooga and Gettysburg. B. W. Kilburn #7708, 8859. G-VG the pair \$4
- 67 -SPANISH-AMERICAN WAR, 1898 - Funeral procession of Maine victims by B.W. Kilburn. #12623. VG \$3.50
- 68 --Soldiers at graves of Maine victims in Cuba. Keystone #9995, 1900. Excellent. \$3.50
- 69 --Admiral Dewey, the Hero of Manila. Portrait in flowers. U&U #1941 Abt. Mint. \$4.50
- 70 --Last Home drill - 71st N.Y. Volunteers day of sailing for Santiago. Good. \$3
- 71 --Rough Riders filling cartridge belts. U&U. Good. \$3.50
- 72 --Hills South from Santiago showing encampment of American Army. U&U. VG \$2.50
- 73 --Embarkation of Spanish troops, Santiago, Cuba. Keystone #9413. Plus #9412 Embarkation of U.S. Artillery after Peace was Proclaimed. VG-Exc. The Pair \$6.50
- 74 --South Dakota troops entrenched at Pasay, awaiting order to fire, Philippines. U&U. VG A great view! \$4.50
- 75 --Battleship Iowa, just before starting to Hawaii and Manila. U&U. Abt. Mint. \$5
- 76 -RUSSO-JAPANESE WAR, 1904 - Russian barrier and wire entanglements closing road against Japanese advance to Port Arthur. U&U #7717. Plus #7578 Japan's dauntless soldiers at Itzushan hill during advance on Port Arthur. Both Excellent. \$7.50
- 77 MISCELLANEOUS: Unusual close view of two men digging out huge snowdrift. Flat green mount c.1870s. Excellent. \$4.50
- 78 -COMBOY - The classic "Real Live Cowboy," on horseback with lariat and holstered sixgun. Color lithograph by T.W. Ingersoll, 1898. G-VG \$4.50
- 79 -PARADE - Civic Parade, Peace Jubilee, Philadelphia, 1898. Keystone #9430, Exc. \$3.50
- 80 -MASONIC - Posed group of Masons in full regalia, taken outdoors at Masonic Encampment at Centre Harbor, N.H. in August, 1869, by H.A. Kimball of Concord. G-VG \$4.50
- 81 OCCUPATIONAL: Fine overview of Palmer Falls Paper Mills, very likely by D. Barnum, showing winch, buildings and workmen posed. Excellent. \$12.50
- 82 --FIREMEN - about 50 firemen posed in full regalia in town square, by H. Ollis of Keene, N.H. Cabinet size. Good. \$19.50
- 83 --Antrim Coal Works, Antrim, Pa. By Gates of Syracuse, N.Y. Excellent. \$7.50
- 84 --Coining Presses, Government Mint, Philadelphia. Keystone #22291. Excellent. \$7.50
- 85 --A Mountain shepherdess. Fine studio pose of young woman. English, c.1868. G-VG \$3.50
- 86 --Old Apple Woman, Boston Common. Fine straight-on close pose, apples on table at right. Pirate on quality mount. Abt. Good. \$4
- 87 --View of winches in quarry, by John S.E. Rogers of Gloucester. #16 in his Cape Ann Scenery series, Cabinet size. About Good. \$3
- 88 --Fine close view of men with tools posed near felled tree trunk and huge block of stone. Cabinet size mount, Fair to A.G. Unusual! \$3.50
- 89 --State Normal School, Salem. Cabinet size view by G.K. Proctor. Good. \$4.50
- 90 --Some of the 4000 employees in the De Beers Diamond Mines, Kimberly, S.A. Great close view of Black workmen posed at mouth of mine with haulers. U&U #11058. Excite! \$7.50
- 91 --Two views in Dallas Cotton Mills, showing female employees working on machines. Keystone #13785, 13787. Both Excellent. \$6.50
- 92 -ARTIST - man painting three women in nightgowns, titled Faith, Hope and Charity. B.W. Kilburn #12836. Excellent. \$5
- 93 PHOTOGRAPHIC: See Mother's Picture. Child shows us framed Cabinet photo. F.G. Weller #519. VG \$5
- 94 -Photographer with huge camera in foreground of view of President McKinley speaking to group of Spanish-American War vets in San Francisco, 1901. U&U. Exc. \$15
- 95 POLITICAL: President McKinley and his Cabinet. U&U, 1900. VG \$4.50
- 96 -President McKinley on the Steamer "St. Louis" at New Orleans. Fine closeup. U&U, 1901. VG, a scarce one \$6.50
- 97 -President McKinley entering Santa Barbara in a carriage of Roses, California. U&U, 1901. Another uncommon view. VG \$6.50
- 98 -President (I) Roosevelt acknowledging the salute of the warships, on the Algonquin, Charleston Harbor, S.C. Fine closeup. U&U, 1902. Excellent. \$8.50
- 99 RISQUE: An unusual and scarce set of seven views of twin ladies in ballet gowns posing in various unconventional acrobatic positions, showing lots of leg. By B.W. Kilburn, #12823-9, 1899. the VG set \$19.50
- 100 -Another Kilburn view, of five young women in a bedroom dressing. "Oh, won't they stare when we all get there." Everyone in underwear and the fashionable and colorful striped knee length hose. #12888, 1899. Excellent. \$4.50
- 101 SHIPS: Steamer Penobscot, Bangor, Maine. Best Series. Abt. Good. \$4.50
- 102 -Deck view, Steamer Herman. Fine view of crew sitting casually. U&U #1290. Good \$7.50
- 103 SPIRIT: Girl daydreams, spirit hand with hourglass at right; "One by one the sands are flowing..." F.G. Weller #310. VG \$4
- 104 -She dreams of love, and lovers sees before her prostrate fall." Young woman with mandolin, two spirit suiters kneel before her. Keystone #12349. Good \$2.50
- 105 STAGECOACH: Two stages loaded with tourists posed before Fort Ticonderoga ruins in New York state. by S.R. Stoddard, Cabinet size. Good. \$12.50
- 106 TRAINS [See also Disasters]: Cog R.R. train taking water from water tower on Mt. Washington Railway. Kilburn Brothers #536, c.1870. Good. \$4.50
- 107 -View of Cog train on Jacob's Ladder, Mt. Washington, by S.F. Adams. Abt. Good. \$2.50
- 108 SPORTS: HUNTING - Taking breath, Toboggan loaded with deer. Close view of two hunters. Griffith & Griffith #4619. Excellent, scarce \$4.50
- 109 WEDDING: Wedding ceremony, by Griffith & Griffith, #16780, 1897. Excellent. \$3
- 110 WESTERN: CALIFORNIA - C.E. WATKINS #5026 Vine Hill from Magnetic Springs, Santa Cruz Co. Small cut into mount at left side, otherwise Excellent. \$7.50
- 111 -CALIFORNIA - C.E. WATKINS #5023 Glenwood Magnetic Springs, Santa Cruz Co. Building among trees. G-VG \$9.50
- 112 --C.E. WATKINS Two more Glenwood Magnetic Springs views, these with hotel buildings and many tourists posed. #5018, 5020. Both Good or so. \$27.50
- 113 -Los Angeles from City Hall Tower. B.W. Kilburn #9967. About Good. \$6
- 114 -A Beautiful street in Sacramento. Couple posed. Stereo-Photo Co. #995. Good. \$5
- 115 -The Orange Pickers, Los Angeles. Nicely posed and tinted view of workers on ladders. By B.W. Kilburn #9981, 1895. VG \$9.50
- 116 -IOWA - Two scarce Cabinet size views in a series titled "East and West Okoboji and Spirit Lakes," by J.E. Rich of Charles City. #5 Eagle Point Harbor; #18 Gould's point, West Okoboji Lake. Boat in former. The VG pair \$8.50
- 117 WASHINGTON D.C.: Six views of details of Brumidi's painting in the dome of the Capitol building, by Bell Brothers, 1867. G-VG \$9.50
- 118 WORLD VIEWS: DENMARK - 10 very scarce early views of domestic, rural, and city street scenes by P. Fangel of Middelfart (that's right) Averaging VG or so \$29.50
- 119 -GERMANY - 2 views by Gustav Liersch & Co. of Berlin; #53 St. Goarshausen und Rhein; #84 Harzburg und der Burgberg. Both town overviews. Excellent scarce \$7.50
- 120 -GREAT BRITAIN - G.W. WILSON 5 views in and of Winchester, Exeter and Gloucester Cathedrals. #297, 303, 401, 402, 407. Good. The lot \$15
- 121 -EGYPT - Two scarce views in Cairo by P. Sebah of Constantinople. Merchant vendor, plus view of Caliphs tents. Some light glue streaking, otherwise Mint. \$7.50
- 122 -JAPAN - 2 Japanese women playing Draughts. Great closeup, but a "European and American Views" pirate c.1880s. Still a scarce and nice view VG \$5
- 123 -MEXICO - 2 Kilburn Brothers views, 1873. #1176 Tropical Foliage, #1186 Orizaba River. Former Excellent, latter VG \$5.50
- 124 -RUSSIA - Rare view of Winter Palace in St. Petersburg c.early 1870s. VG \$5
- 125 -SWITZERLAND - A BRAUN Chute du Giesbach, #546. Good. \$2
- 126 -TURKEY - 3 views in Constantinople by P. Sebah. 2 different overviews, plus St. Sophia interior. Glue streaking impairs last, otherwise Mint very scarce \$12.50
- 127 -SYRIA - Another very scarce view, of a swamp at St. George Bay near Beirut. Flat Orange mount, Excellent. \$3.50

































































